

THE WATER-SAVING COMMUNITY FUND

Application guidance



southwestwater.co.uk



**South West
Water**



What's the Water-Saving Community Fund about?

We all cook with it, clean with it and most importantly drink it – we use it to flush the loo, have a bath and wash our clothes – tap water is a vital part of our everyday lives.

Every year the population grows and demand for tap water increases. Many think it rains all the time and don't realise that **tap water** is a **precious** and **limited resource**.

We're passionate about conserving supplies for people and the environment today, and future generations. **We can't do it alone**, we need everyone to play their part to help save tap water and avoid waste. We're always looking at **new** and **innovative** ways to get our customers and communities involved in water conservation, which is why we've set up the Water-Saving Community Fund.

Have you got an idea to help save tap water in your local community?



We're looking for projects - big and small - whether it's **rainwater flushing public loos**, **drought tolerant gardens**, **water butts** in community allotments, **educational displays** in schools, or **harnessing new technology** to change behaviour towards water use.



Did you know?

Most plants prefer rainwater over tap water



How does the fund work?

Our target...



The average person in our region uses **143 litres** of tap water in a day, by the end of 2025 we want to get that down to **128 litres**

Funding criteria: Projects must meet two key requirements...

1

Water efficiency

The project must save tap water and be able to demonstrate a reduction in water use

2

Benefiting the community

The project must be located within our service area and demonstrate a benefit to the community we serve



Funding available: The amount in the Fund every year is **£75,000**

£0 – £1,000

Projects can be submitted by local community groups.

£1,000 – £10,000

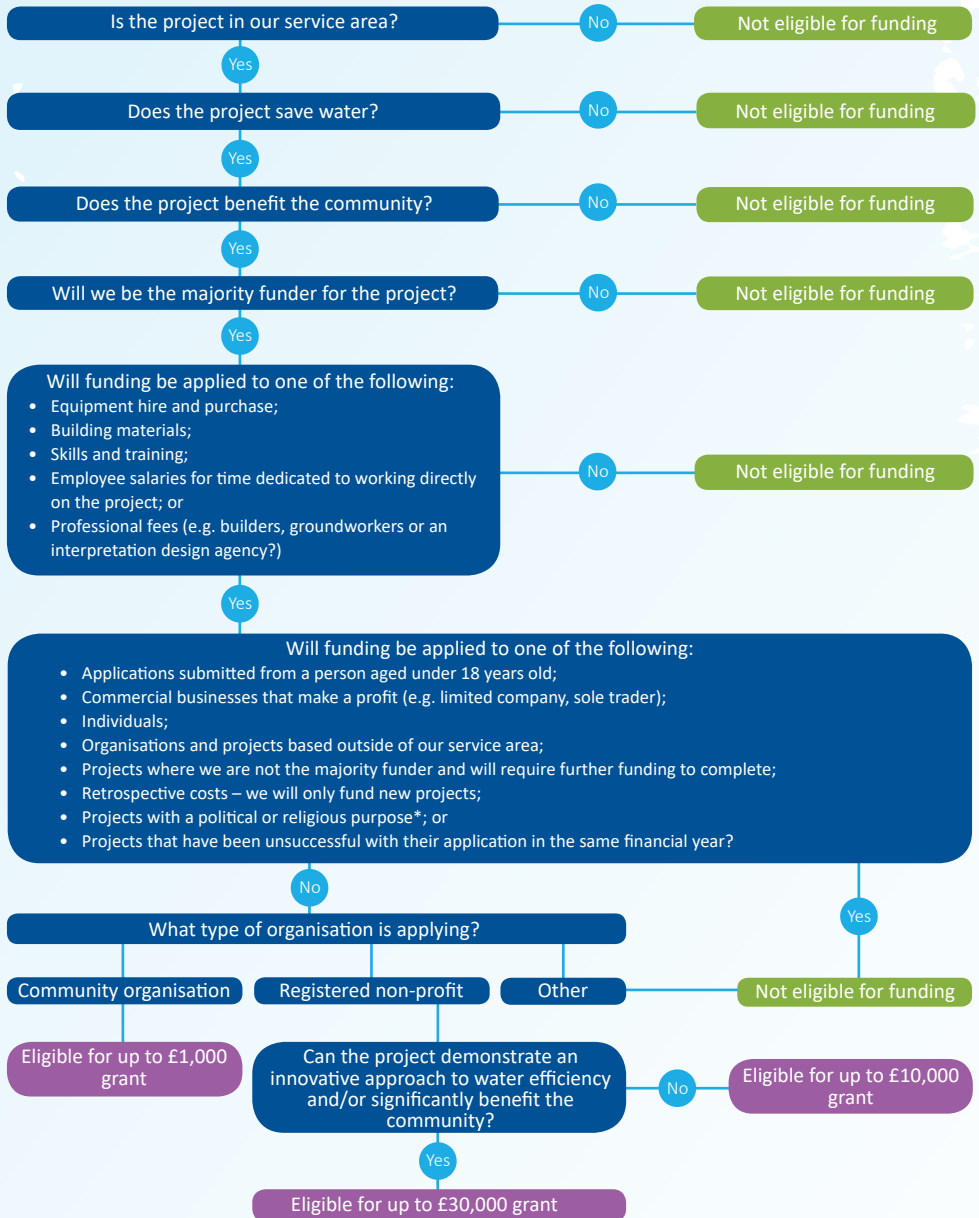
Projects must meet the funding criteria outlined above and be a registered non-profit organisation.

£10,000 – £30,000

Projects must meet the funding criteria, be a registered organisation and demonstrate an innovative approach to water efficiency, and/or significantly benefit the community.

Once the amount of funding available in the Fund is awarded we will not be able to consider any further applications within the same year. We will update our website to make it clear when the cap is reached and when we will be considering new applications.

Funding flowchart



*We can fund religious organisations if their project benefits the wider community and doesn't include religious content.

Application process



What happens when you submit your application?

Applications can be submitted all year round. When we've received your application, our internal team will carry out checks to ensure the project meets the Fund's criteria and can progress for judging.

What we'll need to do:

- Eligibility checks
- Financial/due diligence checks
- Assess the funding criteria have been met
- Use a subject matter expert for advice



When will your application be judged?

Following initial checks our **internal team** will review applications from **community organisations** for smaller projects, under £1,000. Our internal team will approve or reject funding for these projects on a **monthly basis**.

Applications for **funding above £1,000** will go to our **judging panel** for a final decision.

Our judging panel is a mixture of **experts** from across the water industry, they will **meet every quarter** to approve, or reject, applications.



Your application

What happens after judging?

If your project has been successful we will send a letter to let you know, and we'll send our Community Fund Application Agreement for you to sign. You'll need to sign and return the Agreement within fourteen days. In the Agreement we will outline the total Grant awarded and when you'll receive it.

We do not have an appeal process for unsuccessful applications, and we don't accept resubmissions within the same year.

If you've got a question about the Fund, please email MyUse@southwestwater.co.uk

All applications to the Fund must be submitted on our website.
www.southwestwater.co.uk/watersavingfund