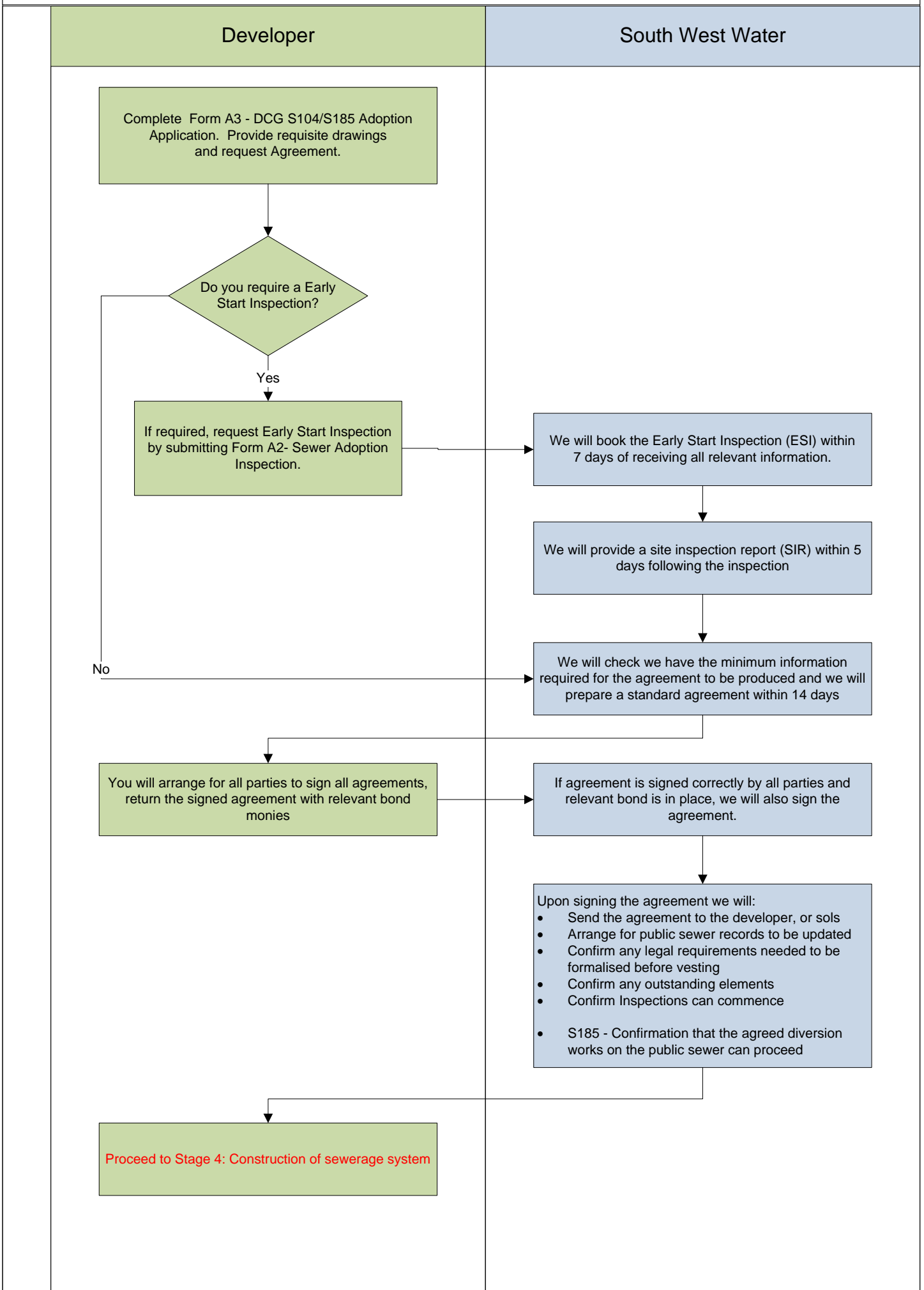


Adoption of sewers – Stage 3: Early Start Inspection (ESI)



How to arrange for your sewers, pump stations and other components to be adopted by South West Water

Stage 3: Early Start Request

We may agree to an early start on site once Conditional Acceptance and/or full Technical Acceptance has been provided. Acceptance of any system is important to ensure that what goes in the ground meets the required standards.

1. You will pay the relevant inspection and administration fees to allow inspections to be undertaken by us. We response will be for information only and is without prejudice to the requirements it may have as part of the full Technical Acceptance process.
2. You need to provide plan showing which sewers you want to be inspected prior to full Technical Acceptance.
3. Where the site has a diversion incorporated within the application **NO** works on the diversion should take place until the Agreement is in place and signed by all parties.

Note that there is a risk that because of the partial nature of the approval, changes may be required as part of Technical Acceptance, resulting in laid sewers needing to be altered to meet the requirements of the Technically Accepted system.

Information provided by you (developer/applicant)	Additional comments
Receive a Conditional or Technical Acceptance for the design of the prospectively adoptable system advising that the system meet the DCG, LP and TS.	
Provide the details to enable an early start to be confirmed: <ol style="list-style-type: none"> 1. Ensure that the system has received a Conditional or Technical Acceptance. 2. Provide the coloured plan and all details needed showing the accepted system which needs to be inspected. 3. Complete the Adoption Inspection form (Form A2), including providing full set of requested information 4. Pays the relevant charges for the system to be inspected. 	The only system that can be requested to be inspected is the element that has met the required specifications and has been provided Conditional Acceptance or full Technical Acceptance. The remainder of the system must be progressed towards Technical Acceptance at the earliest opportunity.
Information provided by us (South West Water)	
The Early start request will be received and reviewed to ensure that the details supplied are sufficient to allow a Pre-start inspection.	If a Conditional Acceptance has been

<p>(Where insufficient details have been supplied to us, we will contact you to advise of the details that are required to enable the inspection.) We will progress the details needed for the Pre-start inspection where full details have been supplied</p>	<p>provided then the Full Technical Acceptance should be progressed to then enable an Agreement to be entered into.</p>
<p>Information provided by you (developer/applicant) If you have provided insufficient details to progress the Early start inspections, you will arrange for any details to be provided to us to re-request the Early start Inspection</p>	

**Proceed to
Stage 3: Adoption Agreement
and
Stage 4: Construction of sewerage system**