

FIGURE B.1
PERMITTED LOCATION OF SEWERS AND
LATERAL DRAINS IN PROXIMITY TO BUILDINGS

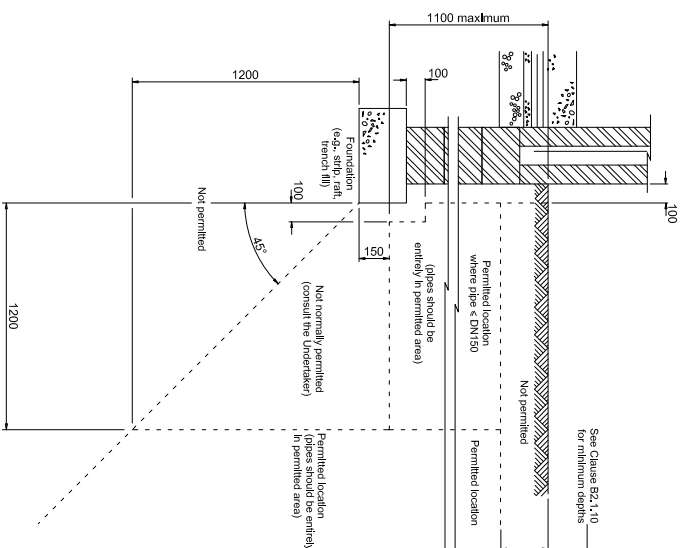


FIGURE B.2
ADDITIONAL DETAIL - PERMITTED LOCATION OF SEWERS
AND LATERAL DRAINS BETWEEN BUILDINGS
(where Figure B.1 is not applicable only)

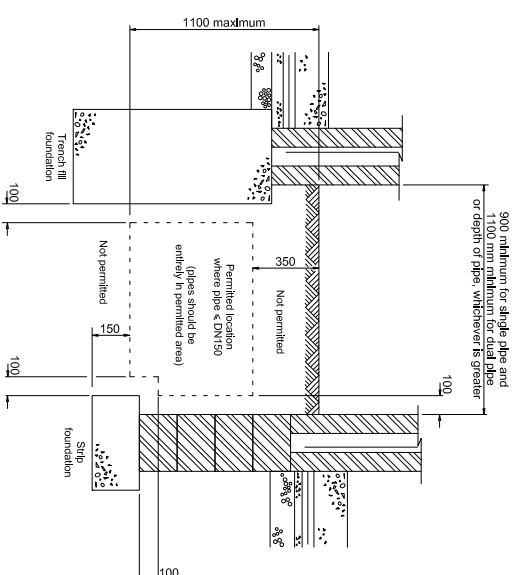
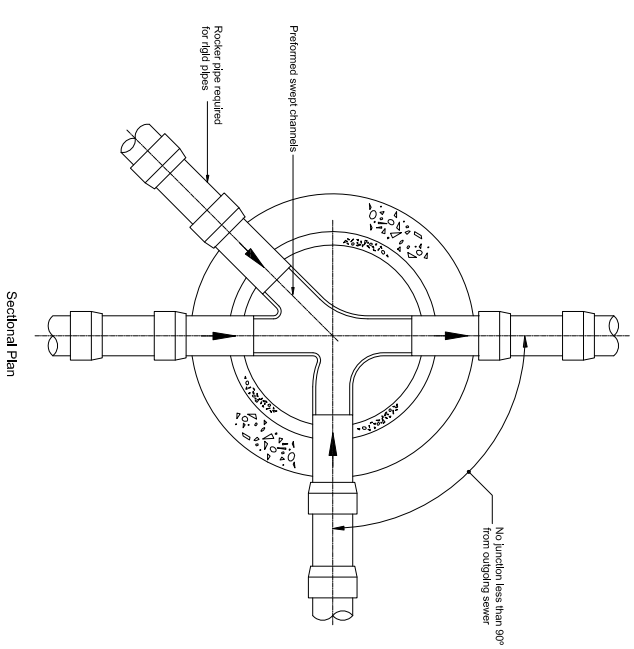


FIGURE B.8
TYPICAL ARRANGEMENT OF PIPE JUNCTIONS WITHIN MANHOLES



Nominal diameter (mm)	Maximum effective length (m)
150 - 200	0.6
300 - 450	1.00
over 450	1.25

All pipes entering the bottom of the manhole to have soffits level.

Not to scale, dimensions in millimetres

Not to scale, dimensions in millimetres

FIGURE B.17
CONNECTIONS TO SEWER

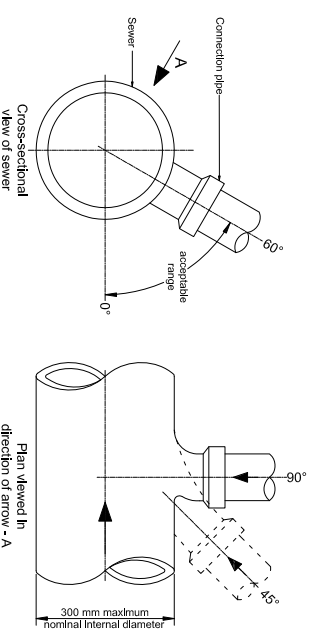


FIGURE B.19
JOINTS FOR CONCRETE ENCASED PIPES

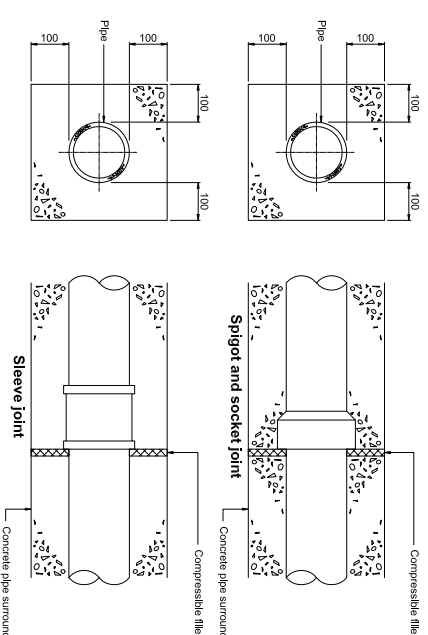


FIGURE B.18
PROTECTION OF PIPES LAID AT SHALLOW DEPTHS

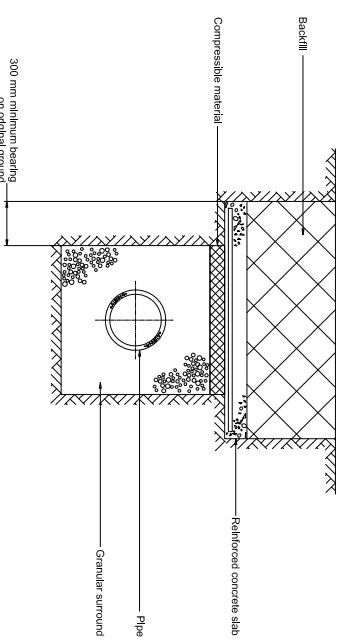
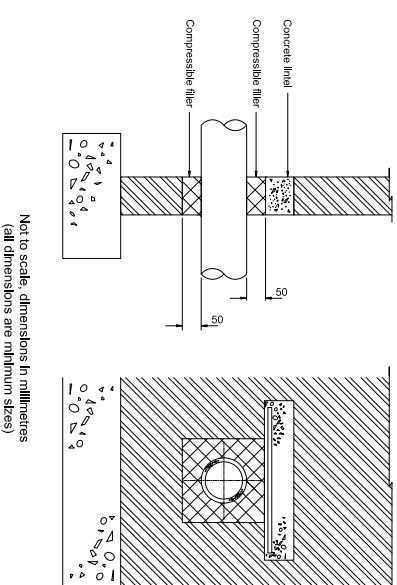


FIGURE B.20
PROTECTION OF PIPES PENETRATING SINGLE LEAF BOUNDARY WALLS



NOTE:
ALL DETAILS TAKEN FROM
"SEWERS FOR ADOPTION
A DESIGN AND CONSTRUCTION GUIDE
FOR DEVELOPERS - SMALL DEVELOPMENTS
VERSION-SEPTEMBER 2013"
TAKEN FROM THE 7th EDITION.

Not to scale, dimensions in millimetres
(all dimensions are minimum sizes)